

# sens.it

## Programmable TPMS Sensors

- 85% Of OE sensors replaced by 2 sensors with a snap-in or clamp-in valve option
- Cover 315MHz versions for Ford, GM, Chrysler, Toyota, Nissan & Honda
- Eliminates re-learning procedure if tire is replaced in the same position
- NO ANNUAL FEES for program updates, program use or support
- Compatible with all TPMS tools - Bartec, Atec, OTC & KTI
- 433 MHz sensor available Q2 2011



Sens.it is an affordable, easy-to-use TPMS programmable sensor system designed for any size automotive service location. Sens.it reduces TPMS parts inventory, cuts tire and wheel service time, and increases profits.

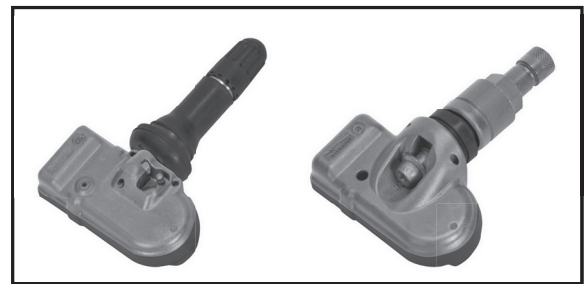
The sens.it (Sensor Intelligent Technology) TPMS specifications Programming System from Alligator is a web-based system that identifies individual vehicle TPMS specifications and programs the new sens.it sensor in less than a minute. Simply enter the vehicle VIN (Vehicle Identification Number) and the faulty/broken sensor serial number into the online sens.it programming screen on your PC and select "Program." The sensor data specific for that vehicle application is downloaded and embedded in the sens.it sensor. It's now ready to install.

Direct download means current TPMS data from the sens.it database is programmed to the sensor. There's no need to "look up" each sensor by application.

Since the system is web based new specs are constantly updated there is no need to refer to application charts.

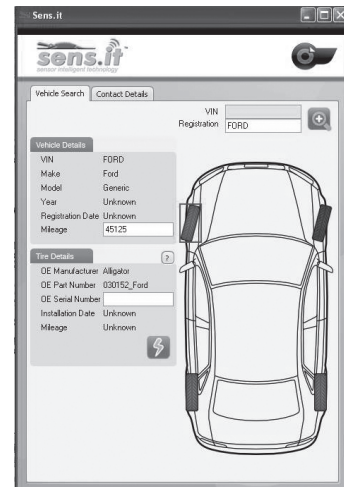
Free optional reporting program allows the dealer or chain to track important service information, i. e.; types and number of vehicles serviced.

**Online Access Required:** Microsoft Windows XP, Vista and 7; install size 10MB of space; plug direct into USB port or powered hub.



**21193** Sensor with **21195** Snap-In Valve  
Rubber Snap-In valve size is similar to a TR413.

**21192** Sensor with **21194** Metal Valve  
The silver aluminum ball joint valve is 1-11/16"



The web-based system identifies individual vehicle TPMS specifications and programs the new sens.it sensor in less than a minute.

Order No.	Mfr. No.	Description
<b>21191</b>	590922	Programming Tool
<b>21192</b>	590902	Ball Joint Sensor
<b>21193</b>	590912	Snap-In Sensor
<b>21194</b>	590906	Metal Valve Replacement
<b>21195</b>	590916	Snap-In Valve Replacement